

PRODUCT NAME: XCALIBRE 10

DESCRIPTION: FALL ARREST BLOCK

PRODUCT CODE: FABX1



PRODUCT FEATURES



Independent Brake Pawls x 2

The two Pawls work independently of one another, this ensures a "fail safe" capability if one should stop working.



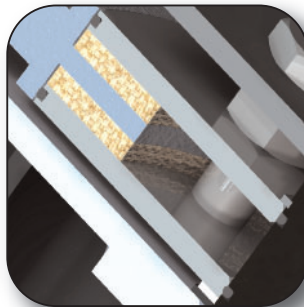
Load Bearing Steel Chassis

The chassis comprises of two hot rolled steel Hangers which give the block it's unique strength.



BCS-Brush Cleaning System

The entry aperture has two opposing brushes which helps to minimise the take up of debris into the block.



SBM - Sealed Brake Module

The Brake Module is sealed by the use of "O" rings which stops water & dust ingress affecting the brakes efficiency.



Carry Handle Attachments

An optional shoulder harness and carrying handle are available which can be easily fitted to your block.



Alloy Swivel Hook

The Alloy Swivel Hook incorporates a load indicator and is approved to EN362 rated to 25kN.

SPECIFICATIONS AND STANDARDS

Anchorage Connection

11mm alloy twist lock karabiner approved to EN362 & rated to 25kN

Galvanised Zinc Wire Rope

4.50mm dia. 19 x 7 minimum breaking load 15kN

Stainless Steel Wire Rope

5mm dia. 7 x 19 minimum breaking load 15kN

Webbing

Polyester 28mm x 1.4mm min. breaking load 15kN

Fibre Rope

5mm dia. Dyneema® SK75 min. breaking load 27kN

Capacity

Wire and Dyneema® Rope: 10m.

Webbing: 8m.

Maximum Arresting force

Wire rope = 4.4kN

Webbing = 3.3kN

Dyneema® = 4.2kN

Total Arrest distance

<1.5m from point of lock on.

Brake lock on distance

200mm nominal

User Weight

136kg maximum

Standards

EN 360, AS/NZS 1891.3.1997 & ANSI

DIMENSIONS



PRINCIPLE MATERIALS

External Housings

PC/ABS High strength and rigidity UV stabilised (Polycarbonate/Acrylonitrile Butadiene Styrene)

Drum

Polyamide 6 Glass Filled

Chassis

Hot Rolled Steel, Zinc plated black

Pawl Plate

Al. Alloy T6 Hard anodised

Ratchet

Al. Alloy T6 Hard anodised

Pawls

Stainless steel, hardened

Pawl Spindles

Stainless steel, hardened

Bearings

Polyamide with PTFE Polytetrafluoroethene

Shaft

Al. Alloy T6 Hard anodised

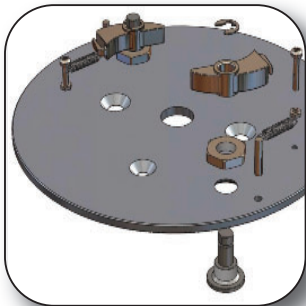
All Fixings

Stainless steel

Swivel Hook

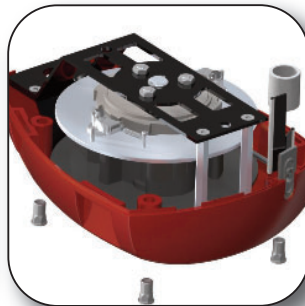
Al. Alloy, Rated to 25kN

PAWL PLATE



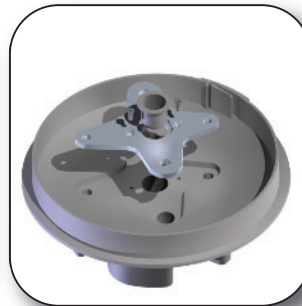
Manufactured from aluminium alloy T6 and hard anodised, this plate retains the hardened stainless Pawls and Spindles.

HOUSINGS



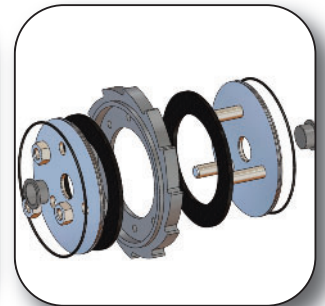
The PC/ABS housings give the block its lightness and exceptional strength, these housings give support and enclose the mechanical assembly.

DRUM



The glass filled nylon Drum which has alloy plates and polyamide bearings accepts all three types of lifeline without any additional parts.

SEALED BRAKE



The brake module is a stainless/ally unit which can be easily replaced after a fall, the "O" rings provide a seal from dust and water ingress.

ORDERING INFORMATION

Part No.	Length	Description	Weight
FABX1-10C	10 meters	Fall Arrest Block Galvanised Wire	4.1kg
FABX1-10CS	10 meters	Fall Arrest Block Stainless Wire	4.1kg
FABX1-10F	10 meters	Fall Arrest Block Dyneema [®] Rope	3.75kg
FABX1-8W	8 meters	Fall Arrest Block Webbing	3.4kg



CHECKMATE LIFTING & SAFETY LLP

New Road, Sheerness, Kent. England, ME12 1PZ Tel: +(0) 1795 580333 Fax: +(0) 1795 668280
email: sales@checkmateuk.com www.checkmateuk.com