

**PRODUCT NAME: FAB3W**

**DESCRIPTION: FALL ARREST BLOCK**

**PRODUCT CODE: FAB3W XCALIBRE**

**PRODUCT FEATURES**



**Brake Pawl**

The Brake activates under the acceleration of the user and triggers the Pawl to lock on to the Shaft



**Load Bearing Steel Chassis**

The chassis comprises of two hot rolled steel Hangers which give the block it's unique strength.



**Polyamide Housings with Grips**

High strength Housings give support to the mechanical assembly and include TPE grips to both sides.



**Shock Pouch**

The Shock Pouch reduces peak shock loads (less than 6kN) and minimises risk of injury to the user.



**Webbing & Shaft**

One piece high tensile brass Shaft which supports the Polyester webbing, minimum breaking load of at least 15kN.



**Alloy Swivel Hook**

The Alloy Swivel Hook incorporates a load indicator and is approved to EN362 rated to 25kN.



**SPECIFICATIONS AND STANDARDS**

**Anchorage Connection**

11mm alloy twist lock karabiner approved to EN362 & rated to 25kN

**Polyester Webbing**

22mm x 1.8mm minimum breaking load 15kN

**Capacity**

3m

**Maximum Arresting force**

Webbing = 4.0kN

**Total Arrest distance**

<300mm from point of lock on.

**Brake lock on distance**

100mm nominal

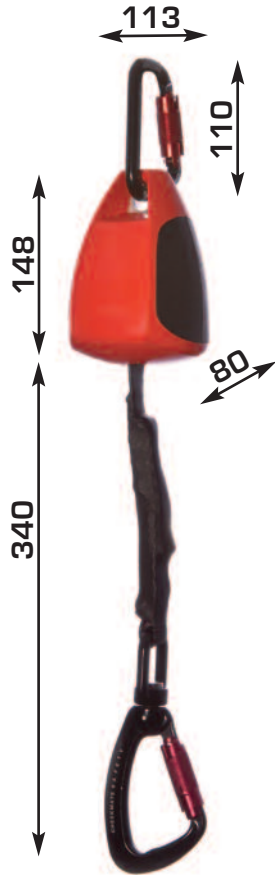
**User Weight**

136kg maximum

**Standards**

EN 360, AS/NZS 1891.3.1997 & ANSI

**DIMENSIONS**



**PRINCIPLE MATERIALS**

**External Housings**

PC/ABS High strength and rigidity UV stabilised (Polycarbonate/Acrylonitrile Butadiene Styrene)

**Grips**

TPE ThermoPlastic Elastomer

**Shaft**

High Tensile Brass HTB3

**Chassis**

Hot Rolled Steel, Zinc plated & Passivated

**Pawls**

Steel, hardened - Zinc plated & Passivated

**Bearing Plates**

PTFE Polytetrafluoroethene

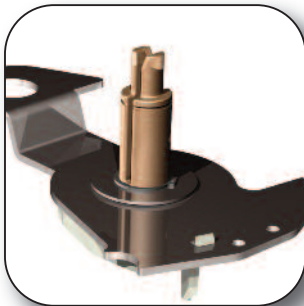
**All Fixings**

Stainless steel

**Swivel Hook**

Al. Alloy, Rated to 25kN

**MAIN SHAFT**



Investment cast from High Tensile Brass, HTB3, this give the assembly its high strength and is resistant to sea water corrosion.

**HOUSINGS**



The PC/ABS housings give the block its lightness and exceptional strength, these housings give support and enclose the mechanical assembly.

**SHOCK POUCH**



The shock pouch will extend to varying amounts dependent on the weight of the user, thus minimising the risk of injury, this keeps forces below 6.5kN

**DUAL**



A simple coupler connects two FAB3W's which can be mounted on the rear "D" of a full body harness giving the user two attachment points for greater safety in the workplace.

**ORDERING INFORMATION**

Part No.	Length	Description	Weight
FAB3W-XCALIBRE	3 meters	Fall Arrest Block Red Housing	1.1kg
FAB3W-XCALIBRE B	3 meters	Fall Arrest Block Black Housing	1.1kg
FAB3W-DUAL	3 meters ea.	Fall Arrest Block Red Dual	2.34kg



**CHECKMATE LIFTING & SAFETY LLP**

New Road, Sheerness, Kent. England, ME12 1PZ Tel: +(0) 1795 580333 Fax: +(0) 1795 668280  
email: sales@checkmateuk.com www.checkmateuk.com