



Checkmate Lifting & Safety Ltd.
New Rd. Sheerness, Kent ME12 1PZ. UK.
Tel: +44(0)1795 580333 Fax: +44(0)1795 668280
www.checkmateuk.com

HLL1W Lifeline Inspection Manual



MODIFICATION	DATE	ISSUE	SIG
1 st Issue	18/05/2014	1	<i>Ahipperfield</i>

CONTENTS

1	ABSTRACT	3
2	VISUAL INSPECTION.....	3
2.1	HEAT DAMAGE.....	3
2.2	LOOSE STRANDS	4
2.3	SEVERED STRANDS	5
2.4	ABRASION	5
2.5	CUT/FRAY	6
2.6	SOILING.....	7
2.7	Visible Core.....	8
2.8	Paint.....	9

1 ABSTRACT

This inspection manual is a guide for competent individuals to conduct inspections on HLL1W Temporary Horizontal Lifeline Systems (HLL). Certain items such as the lifeline must not be serviced in any way by anyone other than Checkmate, other than a visual inspection. Spare parts can be ordered from Checkmate. If any parts of the manual are unclear, clarification must be obtained from Checkmate before proceeding.

2 VISUAL INSPECTION

2.1 HEAT DAMAGE

Inspect the entire lifeline for signs of heat damage such as fibres with a glazed appearance which may feel harder than surrounding fibres. (See image below for clarity).



Acceptable, service may continue.
If the damage is any greater than the example given the lifeline must be removed from service.



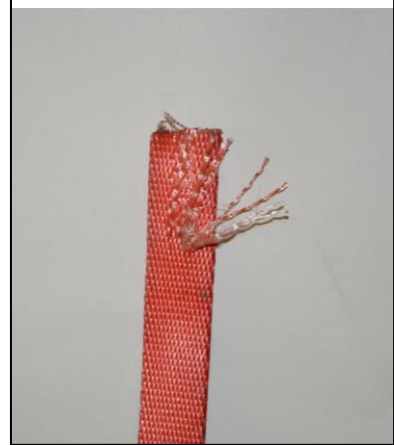
Unacceptable amount of damage, remove from service immediately.

2.2 LOOSE STRANDS

Inspect the entire length of the lifeline for signs of loose strands such as the examples shown below.



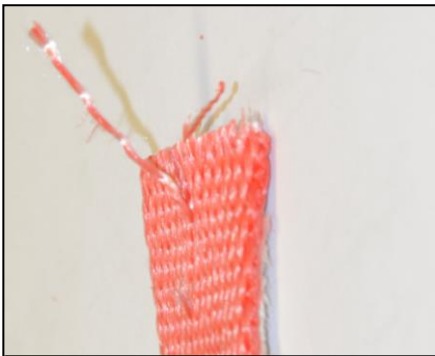
Acceptable amount of damage, service may continue.



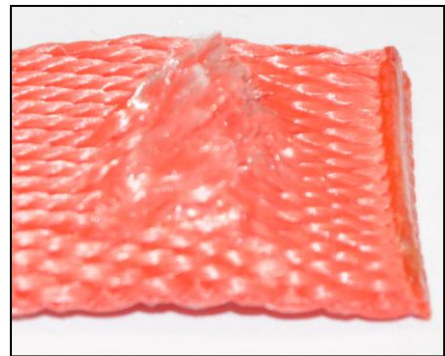
Unacceptable amount of damage, remove from service

2.3 SEVERED STRANDS

Inspect the entire length of the lifeline for signs of severed strands such as the examples shown below.



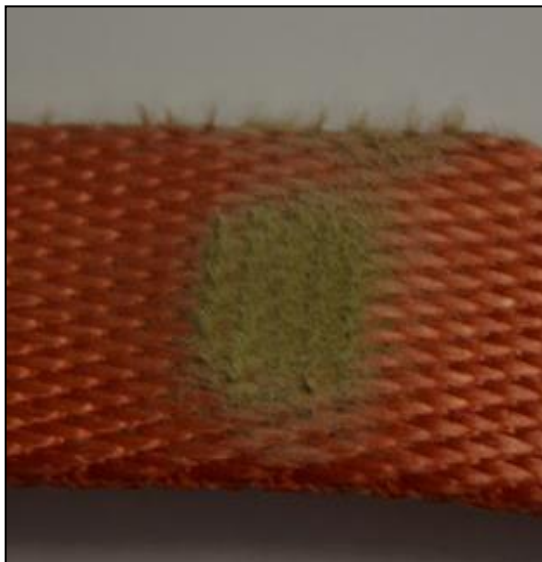
Acceptable amount of damage, service may continue.



Unacceptable amount of damage, remove from service immediately.

2.4 ABRASION

Inspect the entire length of the lifeline for signs of abrasion such as the examples shown below.



Acceptable amount of damage, service may continue.



Unacceptable amount of damage, remove from service immediately.

2.5 CUT/FRAY

Inspect the entire length of the lifeline for signs of cut or frayed strands such as the examples shown below. If the core of the lifeline is visible remove from service immediately (see 2.7 for more information on the webbing core).

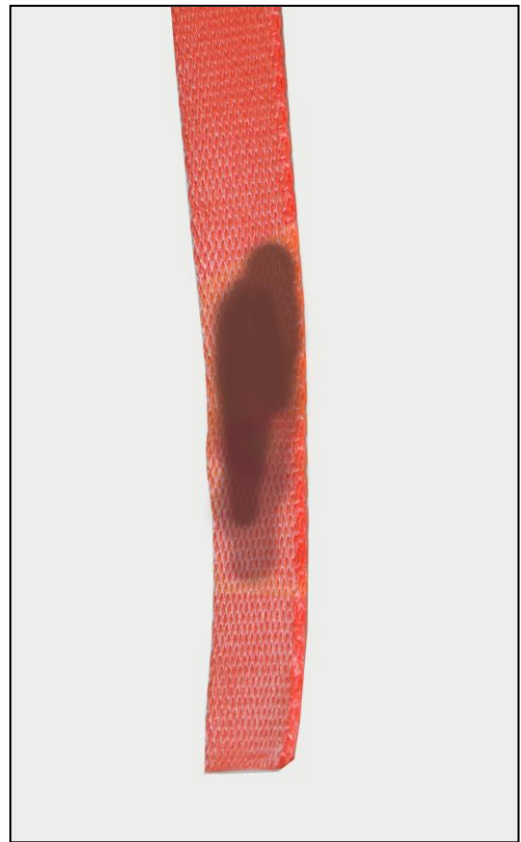


2.6 SOILING

Inspect the entire length of the lifeline for signs of soiling such as the example shown below. If the lifeline has been contaminated by dirt, sand, grit etc it could potentially become damaged both externally and internally. Chemical damage can result in localized weakening and softening- often indicated by flaking in the surface. There may also be a change to the colour of the fibres.



Acceptable amount of spoilage, service may continue.



Unacceptable amount of spoilage, remove from service immediately.

2.7 Visible Core

Inspect the entire length of the lifeline for signs of the core such as the examples shown below. If the core is visible remove the lifeline from service immediately.



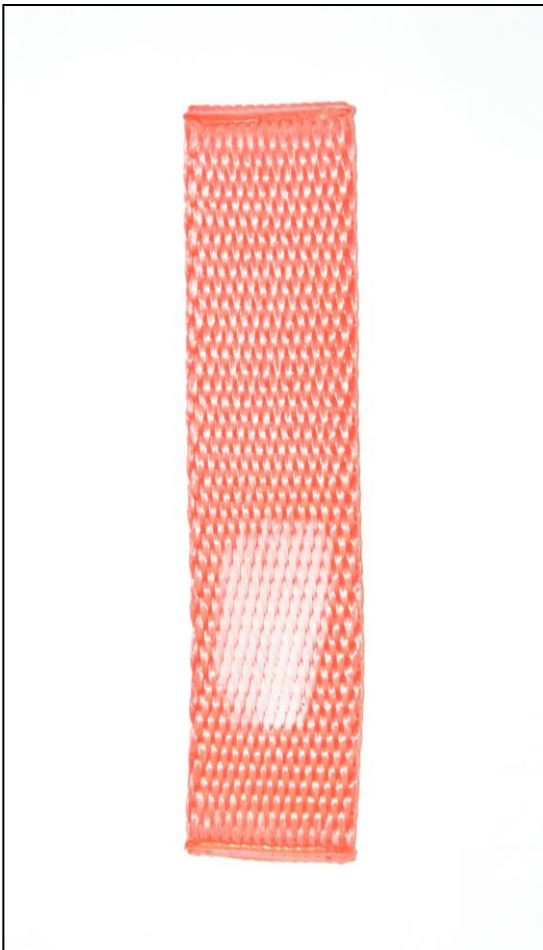
**Unacceptable amount of damage,
remove from service immediately.**



**Unacceptable amount of damage,
remove from service immediately.**

2.8 Paint

Inspect the entire length of the lifeline for paint contaminations such as the example shown below. Paint contamination can be dangerous as the paint may degrade the lifeline or mask other variations of damage such as abrasion.



**Acceptable amount of spoilage,
service may continue.**



**Unacceptable amount of
spoilage, remove from service
immediately.**

TM-013_HLL-LIFELINE_INSPECTION-MANUAL



Checkmate Lifting & Safety Ltd.
New Rd. Sheerness, Kent. ME12 1PZ. UK.
Tel: +44(0)1795 580333 Fax: +44(0)1795 668280
www.checkmateuk.com